



## Outcomes Report 2018: Accountability Measures and Quality Improvements

The FH Flagler's Cancer Committee ensures that patients with cancer are treated according to the nationally accepted measures. Because we are an accredited cancer program through the Commission on Cancer of the American College of Surgeons, we have the opportunity to participate in the quality reporting systems called Cancer Program Practice Profile Report (CP3R) and Rapid Quality Reporting System (RQRS). These quality measures are standards of care based on evidence-based clinical trials

ACCOUNTABILITY MEASURE: 2016 BREAST	
<b>Radiation is administered within 1 year of diagnosis for women under the age of 70 receiving breast conservation surgery for breast cancer (Expected performance &gt;90%)</b>	
FH FLAGLER	82.6
State of Florida	84.7
Similar COC Approved Program	89.1
All COC Approved Programs	91.4
ACCOUNTABILITY MEASURE: 2016 BREAST	
<b>Tamoxifen or third generation aromatase inhibitor is recommended or administered within 1 years of diagnosis for women with AJCC T1c or Stage IB-III hormone receptor positive breast cancer (Expected performance &gt;90%)</b>	
FH FLAGLER	92.1
State of Florida	85
Similar COC Approved Program	90.1
All COC Approved Programs	92.2
ACCOUNTABILITY MEASURE: 2016 BREAST	
<b>Combination chemotherapy is recommended or administered within 45 months (120 days) of diagnosis for women under 70 with AJCC T1c N0 or stage 1B-3 hormone receptor negative breast cancer (Expected performance &gt;90%)</b>	
FH FLAGLER	100
State of Florida	88.5
Similar COC Approved Program	91.9
All COC Approved Programs	93
QUALITY IMPROVEMENT MEASURE: 2016 BREAST	
<b>Image-or palpation-guided needle biopsy to the primary site is performed to establish diagnosis of breast cancer (Expected performance: &gt;80%)</b>	
FH FLAGLER	96.4
State of Florida	85.8
Similar COC Approved Program	90.9
All COC Approved Programs	91.3
SURVEILLANCE MEASURE: BREAST	
<b>Breast Conservation Surgery Rate for women with AJCC clinical stage 0, I or II breast</b>	
FH FLAGLER	59.3
State of Florida	62.7
Similar COC Approved Program	67.4
All COC Approved Programs	62.5

## ACCOUNTABILITY MEASURE: 2016 COLON

Adjuvant chemotherapy is recommended or administered within 4 months of diagnosis for patients under age 80 with stage III (lymph node positive) colon cancer (Expected performance >90%)

FH FLAGLER	100
State of Florida	81.2
Similar COC Approved Program	86.7
All COC Approved Programs	88.6

## QUALITY IMPROVEMENT MEASURE: 2016 COLON

Fewer than 12 nodes pathologically examined (Expected performance >85%)

FH FLAGLER	94.1
State of Florida	91
Similar COC Approved Program	90.3
All COC Approved Programs	92.8

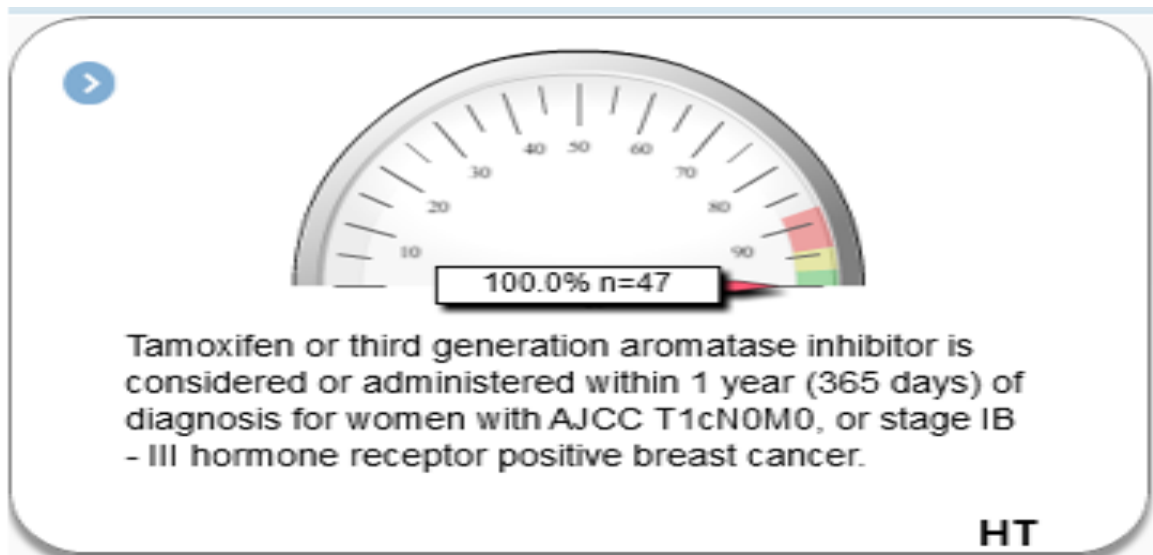
## QUALITY IMPROVEMENT MEASURE: 2016 LUNG

Surgery is not the first course of treatment for cN2 M0 lung cases (Expected performance >85%)

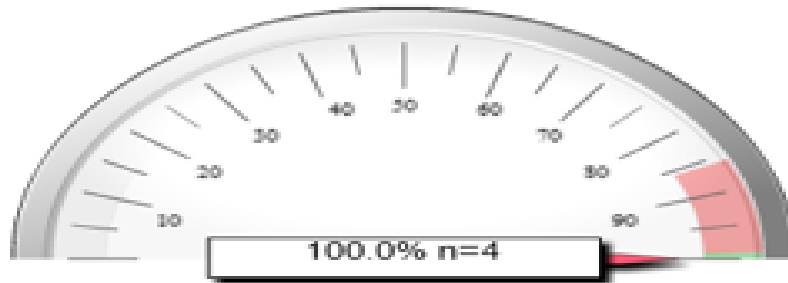
FH FLAGLER	87.5
State of Florida	87.6
Similar COC Approved Program	94.4
All COC Approved Programs	92.9

The Rapid Quality Reporting System (RQRS) is a quality reporting tool that outlines our current measures of standards within 3 months of diagnosis. Here are some examples of our quality measures.

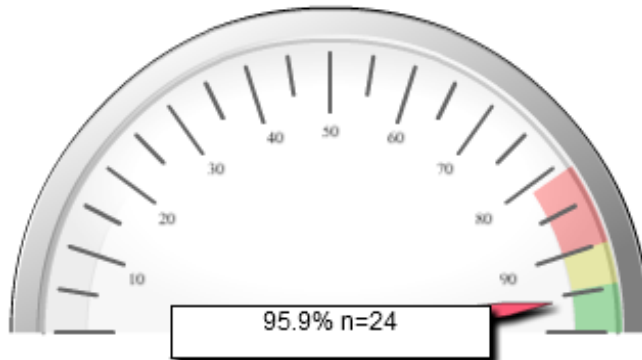
### BREAST MEASURES



## BREAST MEASURES

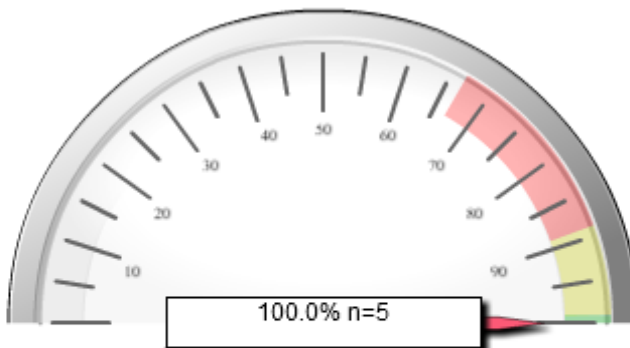


Combination chemotherapy is considered or administered within 4 months (120 days) of diagnosis for women under 70 with AJCC T1cN0M0, or stage IB - III hormone receptor negative breast cancer.



Radiation therapy is administered within 1 year (365 days) of diagnosis for women under age 70 receiving breast conserving surgery for breast cancer.

**BCSRT**

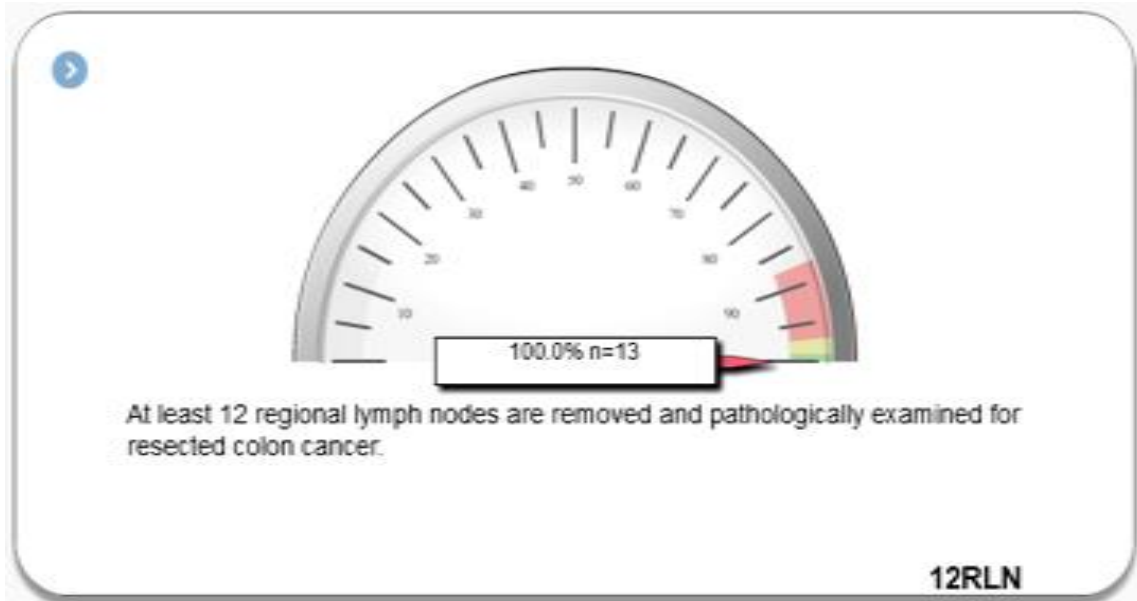


Radiation therapy is recommended or administered following any mastectomy within 1 year (365 days) of diagnosis of breast cancer for women with  $\geq 4$  positive regional lymph nodes

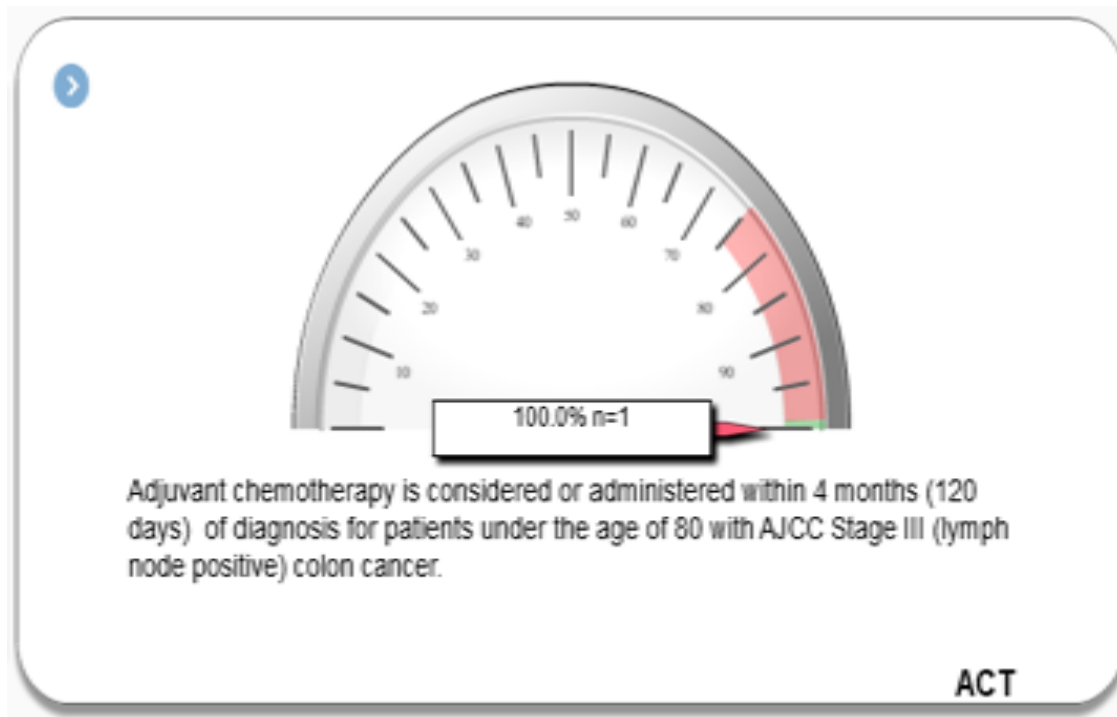
**MASTRT**

## COLON MEASURES

### Expected Performance $\geq 85\%$



### Expected Performance $\geq 90\%$



# 2017 Cancer Statistics

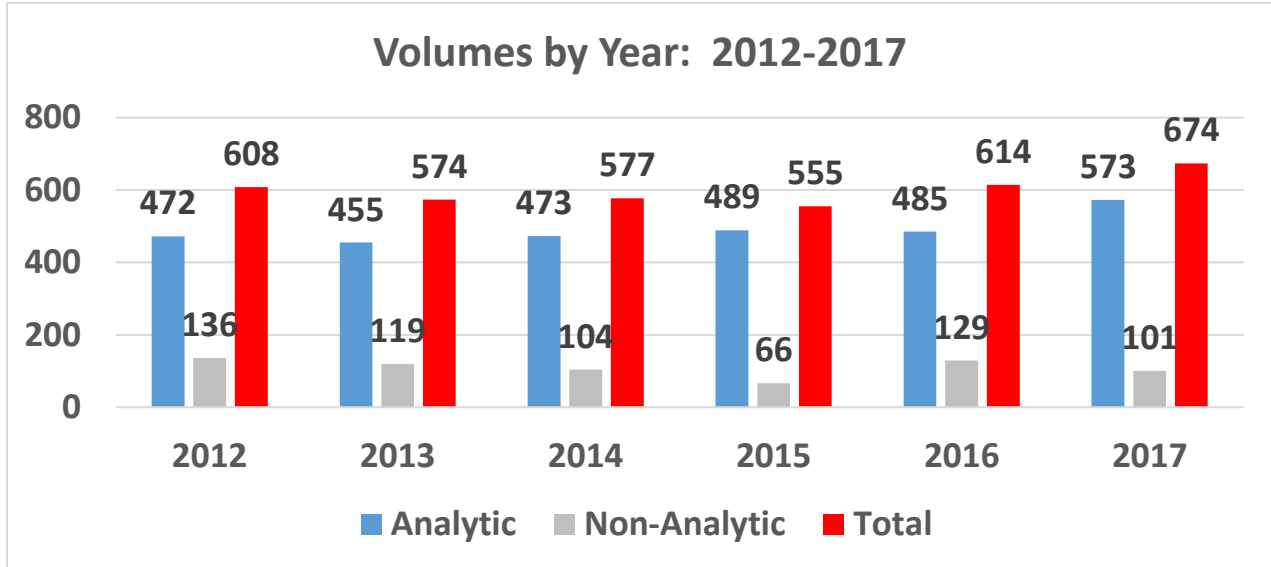
## FH Flagler

PRIMARY SITE	TOTAL	CLASS OF CASE		GENDER		AJCC STAGE						
		Analytic	Non-Analytic	M	F	0	I	II	III	IV	UNK	N/A
<b>All Sites</b>	<b>674</b>	<b>573</b>	<b>101</b>	<b>254</b>	<b>319</b>	<b>77</b>	<b>102</b>	<b>74</b>	<b>67</b>	<b>109</b>	<b>92</b>	<b>52</b>
Breast	122	112	10	1	111	25	38	27	12	5	5	0
Lung - All Types	92	82	10	41	41	0	15	6	19	42	4	0
Lung: Non Small Cell	81	72	9	40	32	0	15	6	1	35	3	0
Lung: Small Cell	11	10	1	1	9	0	0	0	2	7	1	0
Melanoma	48	47	1	27	20	21	8	2	6	3	7	0
Colon	47	43	6	17	26	6	5	15	5	7	5	0
Prostate	39	22	17	22	0	0	3	10	1	7	1	0
Head & Neck	33	24	9	18	6	0	1	0	2	12	5	2
Bladder	32	27	5	19	8	10	4	5	0	2	6	0
Kidney/Renal	29	26	3	13	13	2	6	0	3	4	11	0
Rectum	26	25	1	19	6	7	1	0	4	2	12	0
Pancreas	21	20	1	9	11	0	5	1	1	11	2	0
Non-Hodgkin's	20	16	4	9	7	0	8	2	3	0	3	0
Leukemia	17	8	9	5	3	0	1	3	1	0	8	8
Other/ Biliary Tract	15	15	0	5	10	2	1	0	3	0	3	6
Brain/CNS (Malignant and Benign)	15	11	4	6	5	0	0	0	0	0	0	11
Esophagus	13	12	1	11	1	1	0	2	2	1	6	0
Uterus	12	10	2	0	10	1	2	0	2	1	4	0
Multiple Myeloma	10	6	4	4	2	0	0	0	0	0	0	8
Liver	9	6	3	4	2	0	0	1	2	0	0	3
Unknown Primary	5	5	0	1	4	0	0	0	0	0	0	5
Thyroid	5	5	0	1	4	0	0	0	1	0	4	0
Anus/Anal Canal	4	4	0	0	5	0	1	0	1	0	2	0
<b>OTHER SITES</b>	<b>60</b>	<b>48</b>	<b>12</b>	<b>22</b>	<b>24</b>	<b>1</b>	<b>3</b>	<b>0</b>	<b>15</b>	<b>12</b>	<b>4</b>	<b>9</b>

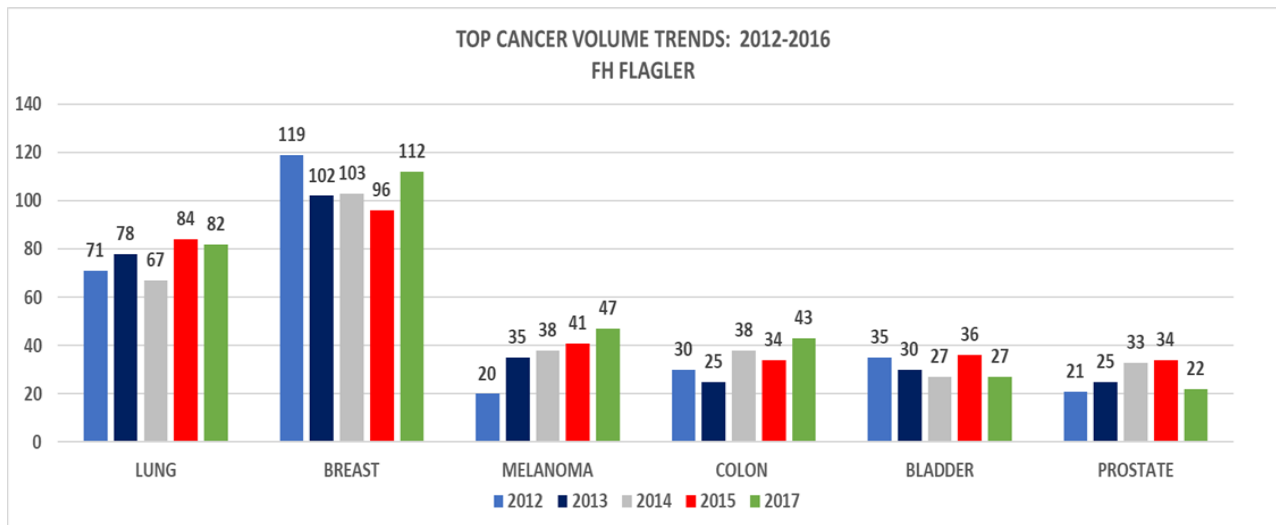
The table above represents top cancers diagnosed /treated at FH Flagler during 2017. Breast cancer is the most prevalent cancer with 112 analytic cases. Lung was the second most common cancer with 82 analytic cases. The next 3 most common cancers were colon, melanoma and bladder. During 2017, there were a total of 674 cases reported, which is 60 more than the prior year. There were 573 analytic cases, which represent patients we diagnosed and/or treated for their cancer. There were 101 non-analytic cases, representing patients diagnosed and treated elsewhere and seen at FH Flagler for recurrence or progression of cancer.

# 2017 Cancer Statistics FH Flagler

## CANCER CASE VOLUMES: 2012- 2017



There was a significant increase, 15.4%, in cancer case volume of analytic cases from 2016 to 2017. Analytic cases represent patients we diagnosed and/or treated for their cancer during that year. 2017 was a highest year in total volume since 2012.

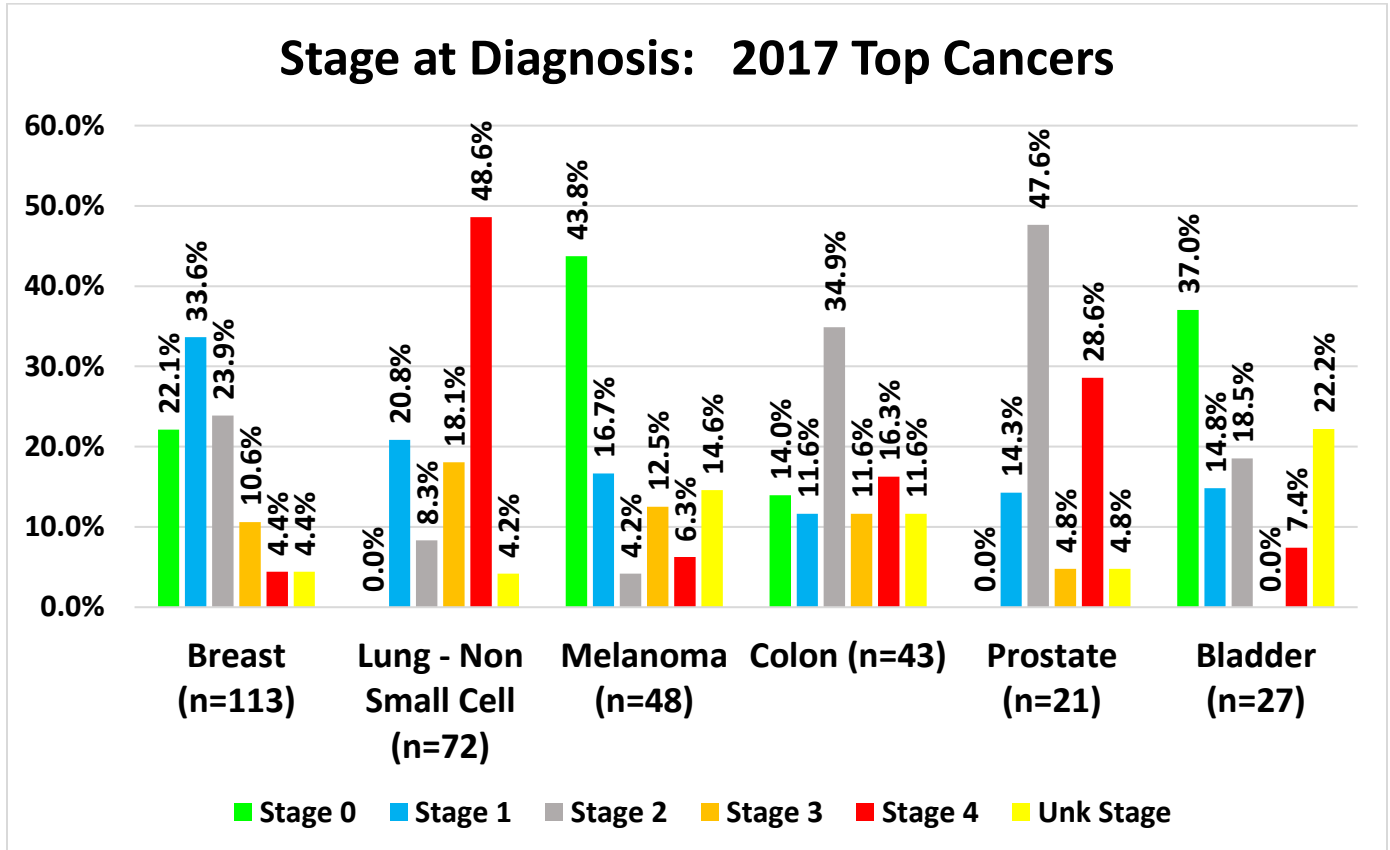


The above graph represents our top cancer sites and volume trends for the past 5 completed years of data. There were volume increases in breast, melanoma and colon, while decreases in volumes were seen in bladder and prostate.

# 2017 Cancer Statistics FH Flagler

## Stage at Diagnosis Top 5 Cancer Sites

2016 Analytic Cases



The above table represents the Stage at Diagnosis of our top sites of our analytic cases. About 55% of our breast cancer patients are diagnosed at very early stages (Stage 0-1). In 2017, 79.6% of our breast cancer patients diagnosed at early stages (Stage 0-2). In contrast, 67% of our lung cancer (non-small cell lung cancer) were diagnosed at advanced stages (Stages 3-4) compared to 56% of national data. Nearly 44% of our cases of melanoma were found at Stage 0.

# 2017 Cancer Statistics FH Flagler

## Cancer Incidence with Comparative Data

2017 Cases Analytic Cases			2017 Cases Analytic Cases		
FH Flagler Incidence % (n=254)	MALE: CANCER TYPE	ACS * Incidence % (n=836,150)	FH Flagler Incidence % (n=319)	FEMALE: CANCER TYPE	ACS * Incidence % (n=852,360)
9%	Prostate	21%	35%	Breast	30%
16%	Lung	14%	13%	Lung	12%
7%	Colon & Rectum	8%	8%	Colon & Rectum	8%
7%	Bladder	7%	3%	Uterine Corpus	7%
11%	Melanoma - Skin	6%	1%	Thyroid	5%
5%	Kidney & Renal Pelvis	5%	2%	Non-Hodgkin Lymphoma	4%
4%	Non-Hodgkin Lymphoma	5%	6%	Melanoma - Skin	4%
7%	Oral Cavity & Pharynx	4%	3%	Kidney & Renal Pelvis	3%
2%	Leukemia	4%	3%	Pancreas	3%
2%	Liver & Intrahepatic bile duct	3%	1%	Leukemia	3%

\*ACS: American Cancer Society's Cancer Facts and Figures - 2017

**The above table illustrates the cancer incidence by gender compared to national data of the American Cancer Society. For our male population, we see a much lower incidence of prostate due to that being treated in the community setting and not at the hospital. We see a much higher incidence of melanoma and slightly higher incidence of Lung, Melanoma and Head and Neck cancers. For our female populations, we have a higher incidence of breast, lung, colon and melanoma cancers. We have a lower incidence of uterine, thyroid, lymphoma and kidney.**



# 2017 Cancer Statistics

## FH Flagler

### Stage at Diagnosis with State and National Comparisons

This comparison data is made available through our reporting to the National Cancer Data Base of the Commission on Cancer. The most recent available comparison data is from 2016. Data from 2015 and 2017 were added for comparison.

BREAST CANCER						
FACILITY/NATIONAL	STAGE 0	STAGE 1	STAGE 2	STAGE 3	STAGE 4	UNKNOWN
	%	%	%	%	%	%
FH FLAGLER - 2017 (n=113)	22%	34%	24%	11%	4%	4%
FH FLAGLER - 2016 (n= 93)	16%	43%	20%	11%	7%	3%
FH FLAGLER - 2015 (n=91)	19%	41%	27%	8%	2%	3%
COC-NATIONAL DATABASE (Community Programs in Florida - 13 hospitals; n=806)	17%	45%	24%	7%	5%	2%
COC-NATIONAL DATABASE (All types of programs in Florida -66 hospitals; n=14070)	23%	40%	23%	8%	4%	3%
COC-NATIONAL DATABASE (All types of programs in Florida; 1303 hospitals; n=230753)	20%	43%	24%	7%	4%	1%

At FH Flagler, we had a lower percentage of cases diagnosed with in-situ (Stage 0) breast cancer in 2016. However, in 2017, this increased to 22% and very similar to comparison data. During 2016, FH Flagler had a higher percentage of cases diagnosed in Stages 3 and 4 compared to national data. Higher than normal stage 3 incidence remained during 2017.

#### COLON CANCER

FACILITY/NATIONAL	STAGE 0	STAGE 1	STAGE 2	STAGE 3	STAGE 4	UNKNOWN
FH FLAGLER - 2017 (n=43)	14%	12%	35%	12%	16%	12%
FH FLAGLER - 2016 (n=33)	9%	12%	24%	24%	21%	9%
FH FLAGLER - 2015 (n=37)	8%	19%	16%	16%	22%	19%
COC-NATIONAL DATABASE (Community Programs in Florida - 13 hospitals; n=374)	2%	18%	25%	29%	20%	6%
COC-NATIONAL DATABASE (All types of programs in Florida - 66 hospitals; n=4513)	6%	19%	24%	27%	19%	5%
COC-NATIONAL DATABASE (All types of programs in Florida; 1303 hospitals; n=70607)	5%	2%	24%	25%	20%	5%

We have a higher percentage of cases diagnosed with stage 0 disease in 2016 compared to national data. Our stage at diagnosis is similar across the board to comparisons of data from other hospitals in the State of Florida. However, there was a substantial increase in the percent of cases in Stage 0 and Stage 2 during 2017 compared to national data. We have high percent of cases staged as unknown - which will be reviewed.

# 2017 Cancer Statistics FH Flagler

## Stage at Diagnosis with State and National Comparisons

LUNG CANCER - NON SMALL CELL					
FACILITY/NATIONAL	STAGE 1	STAGE 2	STAGE 3	STAGE 4	UNKNOWN
FH FLAGLER - 2017 (n=72)	21%	8%	18%	49%	4%
FH FLAGLER - 2016 (n=70)	20%	7%	27%	40%	6%
FH FLAGLER - 2015 (n=80)	34%	11%	20%	31%	2%
COC-NATIONAL DATABASE (Community Programs in Florida - 13 hospitals; n=651)	25%	10%	18%	40%	6%
COC-NATIONAL DATABASE (All types of programs in Florida-66 facilities - n= 8178)	31%	10%	19%	38%	2%
COC-NATIONAL DATABASE (All types of programs in US - 1303 Hospitals; n=126131)	39%	9%	19%	41%	2%

This review of lung cancer is limited to the non-small cell cancer type. In 2016, only 20% of our cases were diagnosed at Stage 1 compared to 25-39% in similar programs. During that same year, our stage 4 cases represented 40%, which was very similar to other programs. During 2017, our percent of cases with Stage 1 cases stayed approximately the same at 21% while our Stage 4 cases increased to 49%, which is substantially higher than all national comparisons listed above.